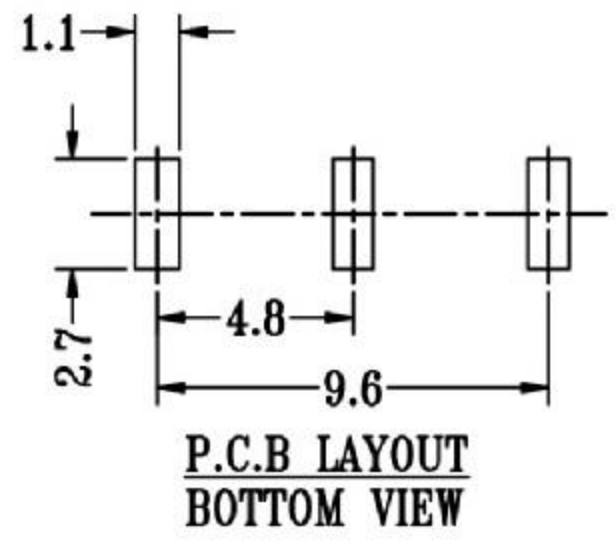
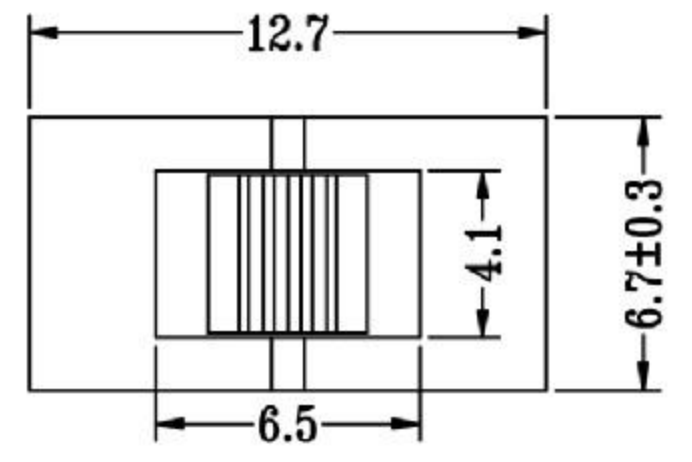
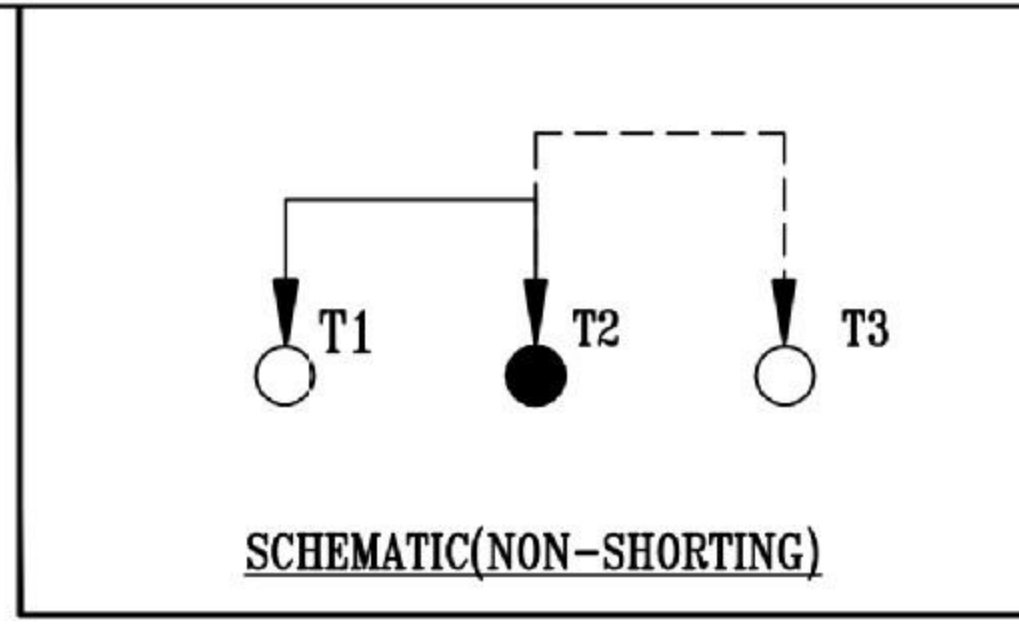
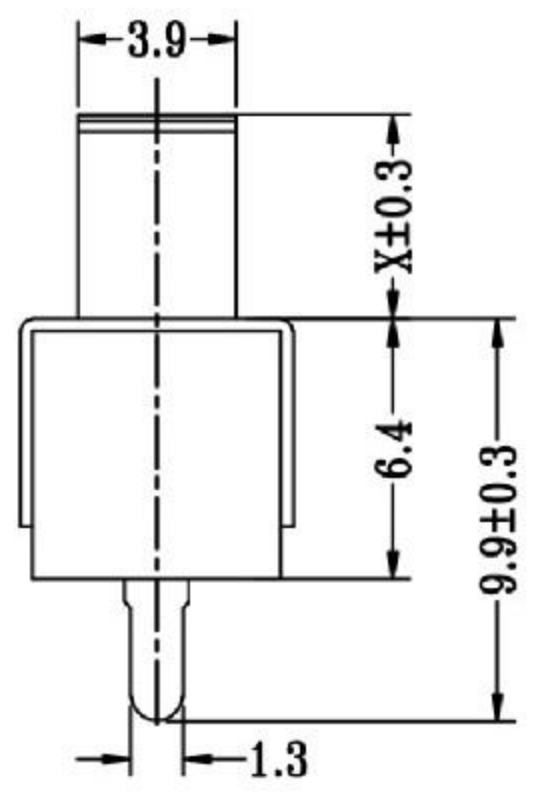
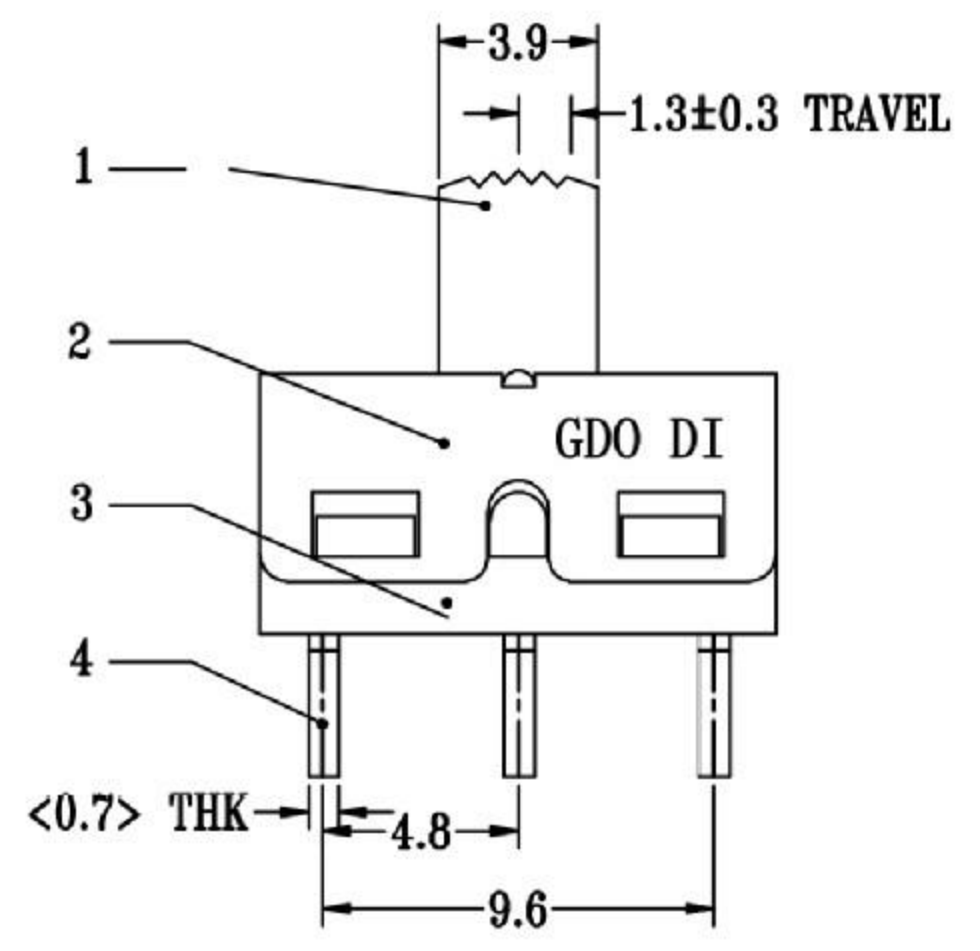


CAD FILE:



大电流拨动开关技术参数:

1. 额定负荷: 2A 250V 3A 125V AC
2. 接触阻抗: $\leq 50\text{m}\Omega$
3. 绝缘阻抗: $\geq 100\text{m}\Omega$ DC500V
4. 耐焊温度: $250 \pm 5^\circ$ 5s
5. 使用寿命: 10,000 cycles
6. 使用温度: -25°C to 80°C
7. 使用湿度: $\leq 85\%$ RH
8. 操作力: 160gf 250gf 300gf 可定制
9. 手柄长度: 2mm-10mm 可定制

NO.	PARTS	MATERIALS	Q'TY	FINISH	TOLERANCE UNLESS SPECIFIED		样板图纸				
8					WITHIN 1.5mm : $\pm 0.1\text{mm}$	A	ISSUE	DATE	DESCRIPTIONS OF REVISION	APPD.	
7	STEEL BALL	STEEL	1	NATURAL	OVER 1.5mm : $\pm 0.2\text{mm}$						
6	SPRING	STEEL WIRE	1	NATURAL	TITLE : VERTICAL SLIDE SWITCH					UNIT : mm	DRWG NO.: GD-SS13D11D-KDRR
5	CONTACT	COPPER STRIP	1	Ag PLATED						SCALE: 3 : 1	DWN.
4	TERMINAL	COPPER STRIP	3	Ag PLATED	MODEL: GD-SS13D11D-KDRR					CHK'D	
3	CASE	NYLON	1	BLACK						东莞市高迪电子有限公司	
2	COVER	SUS	1	NATURAL							
1	KNOB	NYLON	1	BLACK							